

Fire Evacuation Routes

ElliTe Studios College, Penny Appeal Campus, Thornes Park, Wakefield, WF2 8QZ



Front door main entrance (capacity 200 persons)

Studio 2 back door (capacity 200 persons)

Fire door at other end of corridor (capacity 100 persons)

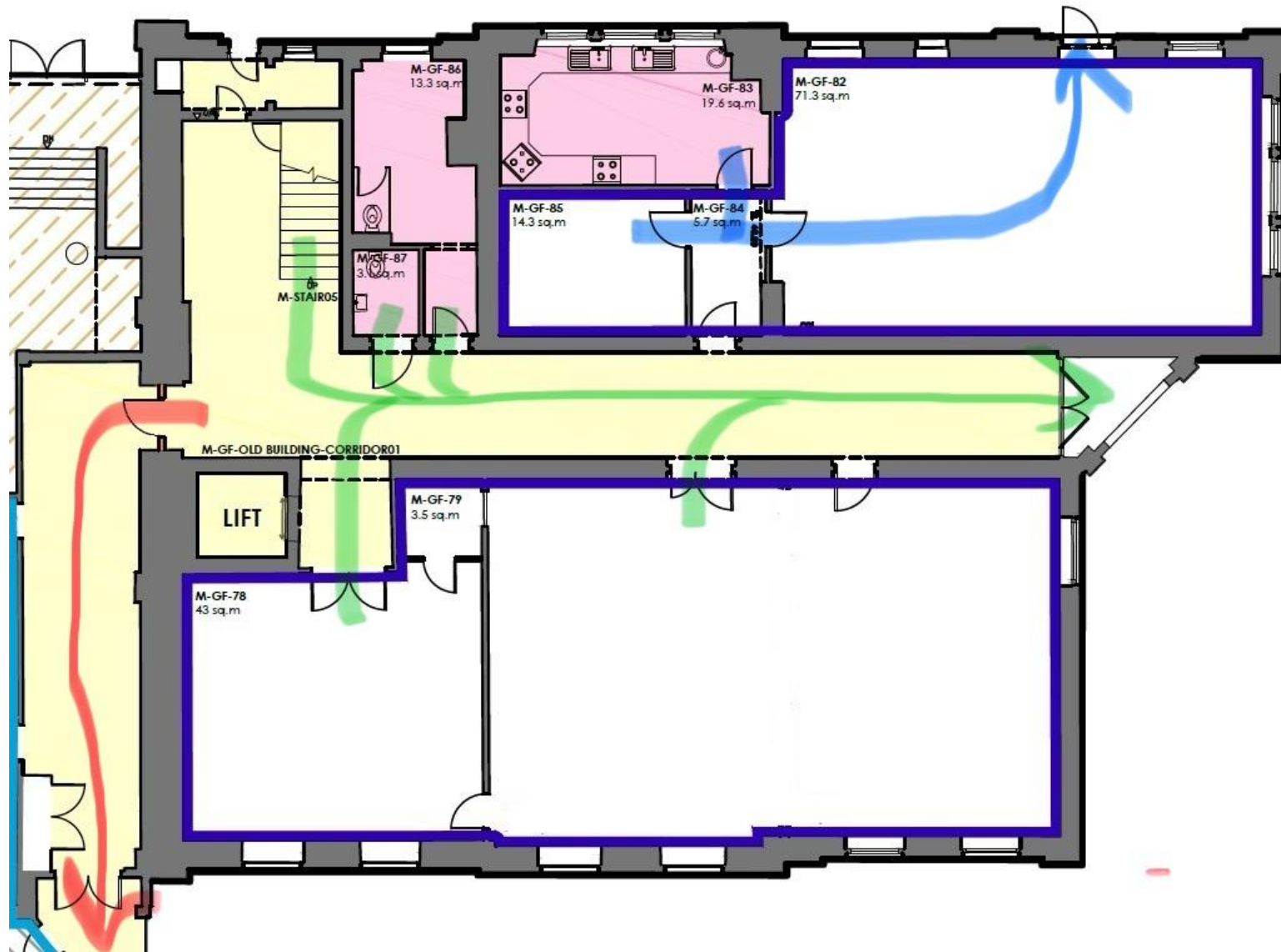
From	Main route (route 1)	Route 2 (if route 1 blocked/unsafe)	Route 3 (if route 1, 2 blocked/unsafe)
GF - Studio 1	Front door main entrance	Studio 2 (back door)	Fire door at end of corridor
GF - Studio 2	Studio 2 (back door)	Front door main entrance	Fire door at end of corridor
GF - Girls Changing room	Studio 2 (back door)	Front door main entrance	Fire door at end of corridor
GF - Kitchen	Studio 2 (back door)	Front door main entrance	Fire door at end of corridor
GF - Corridor	Front door main entrance	Fire door at end of corridor	Studio 2 (back door)
GF - Boys Changing room and disabled toilet	Front door main entrance	Fire door at end of corridor	Studio 2 (back door)
FF – Wardrobe, toilet block, studios 3, 4, 5, office	Main stairwell down then GF front door main entrance	Pass through the fire door at end of FF corridor which will lead into the rest of the campus, then follow emergency exit signs to the nearest staircase and exit out of the building	When on GF - studio 2 (back door) or fire door at the bottom of the stairs that leads into the rest of the campus

Maximum distance of travel to escape route – 20 m

Ground Floor Evacuation Routes

Green = Main routes through our premises (routes 1 & 2)

Red = Alternate route into the rest of the campus (route 3)

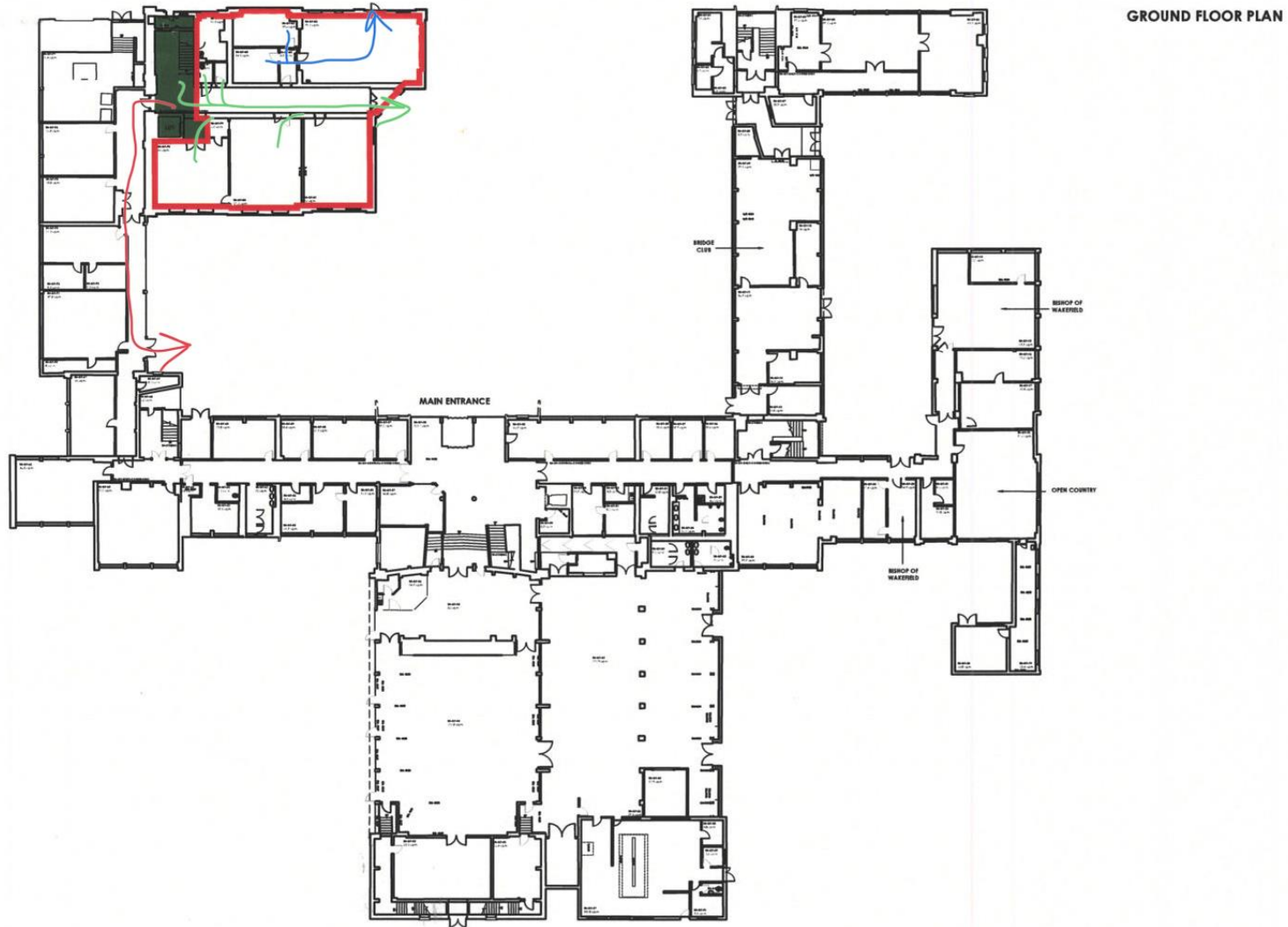


Full Campus Ground Floor Plan Evacuation Routes

Green and Blue = Main routes through our premises (routes 1 & 2)

Red = Alternate route into the rest of the campus (route 3)

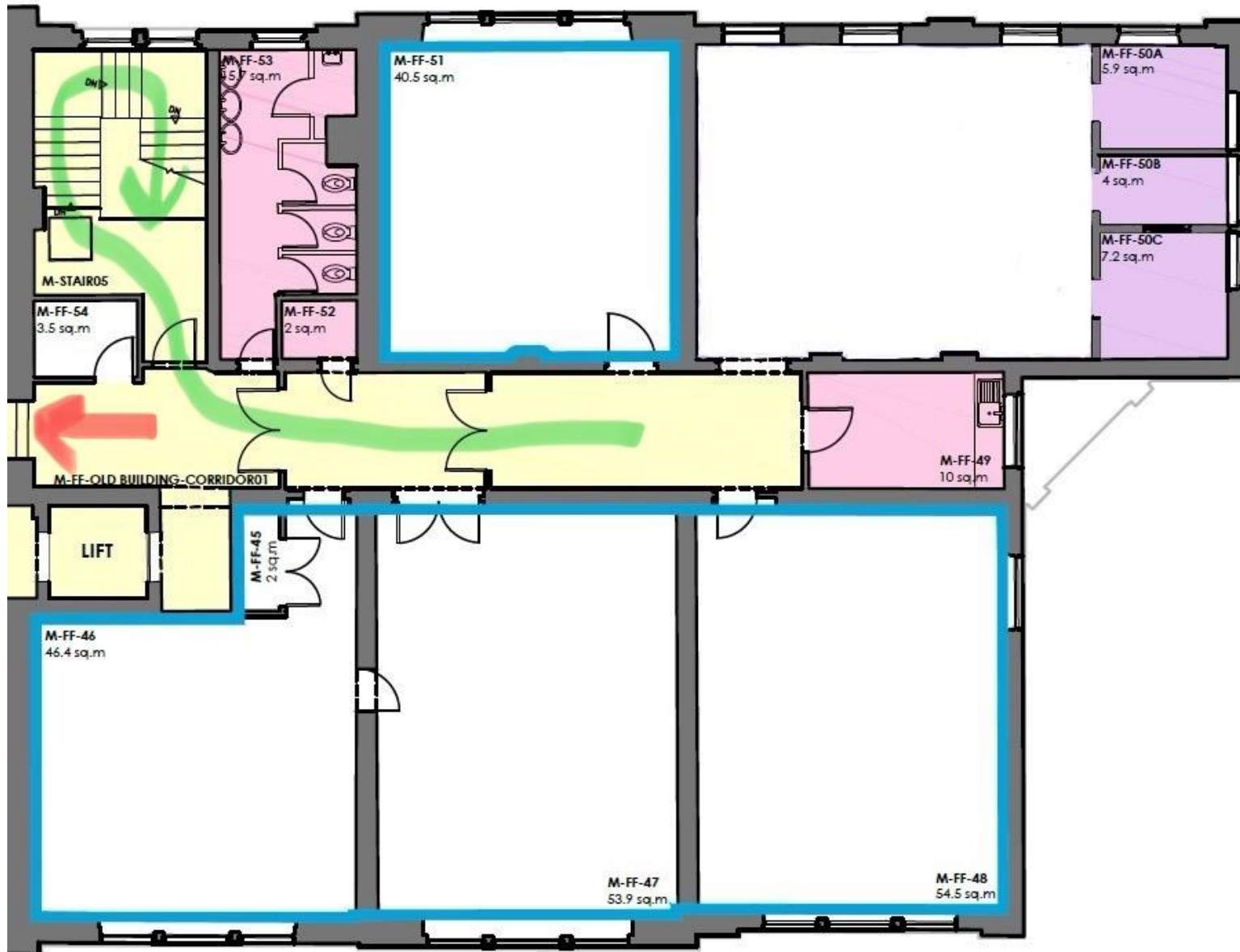
This drawing is copyright and may not be reproduced in whole or part without written authority.
The Harris Group Ltd does not accept liability for any deviation from our drawings or specification.
Do not scale off this drawing.



First Floor Evacuation Routes

Green = Main route, then head to the nearest and clearest fire exit on ground floor (green or red)

Red = Alternate route into the rest of the campus



Full Campus First Floor Plan Evacuation Routes

Green = Main route, then head to the nearest and clearest fire exit on the ground floor (green or red)

Red = Alternate route into the rest of the campus

